



# friulsider

SCHEDA TECNICA – TECHNICAL SHEET

Via Trieste 1, 33048 San Giovanni al Natisone, Udine, Italia  
 Tel. +39 0432 747911 - Fax +39 0432 758444  
 www.friulsider.com - info@friulsider.com  
 Assistenza tec. per Italia: Tel. 0432 747906 - Fax verde 800 301052

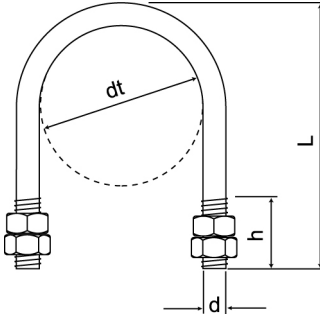


**CAD-CSA** Cravatta d'ancoraggio / Steel clamp

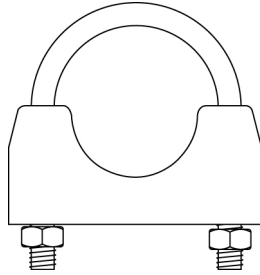
Rev: 00  
Pag. 1/1

## DATI TECNICI - TECHNICAL DATA

CAD



CSA



- d = diametro vite / screw diameter
- dt = diametro tubo / tube diameter
- L = lunghezza cravatta / clamp length
- h = lunghezza filetto / thread length

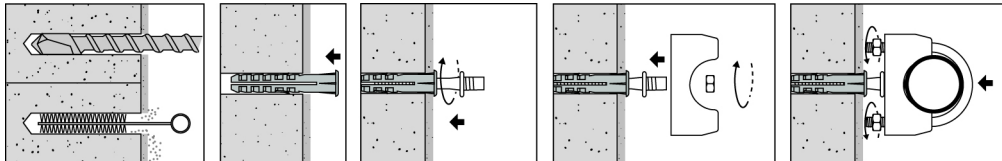
### CAD: cravatta d'ancoraggio / steel clamp

dt pollici / inches	dt mm	d mm	L mm	h mm	Cod.
3/8"	17,4	M6	38	15	50800b00003
1/2"	21,7	M6	42	15	50800b00004
3/4"	27,1	M6	48	15	50800b00005
1"	34	M6	59	20	50800b00006
1 1/4"	42,7	M6	68	20	50800b00007
1 1/2"	48,6	M8	81	25	50800b00008
2"	60,7	M8	93	25	50800b00009
2 1/2"	76,3	M8	108	25	50800b00011
3"	89,4	M8	121	25	50800b00012
4"	114,9	M8	146	25	50800b00014
5"	139,7	M8	172	25	50800b00016
6"	165,1	M8	197	25	50800b00017

### CSA: cravatta d'ancoraggio con staffa / steel clamp with bracket

dt pollici / inches	dt mm	d mm	L mm	h mm	Cod.
1/2"	21,7	M6	42	15	50801b00002
3/4"	27,1	M6	48	15	50801b00003
1"	34	M6	59	20	50801b00004
1 1/4"	42,7	M6	68	20	50801b00005
1 1/2"	48,6	M8	81	25	50801b00006
2"	60,7	M8	93	25	50801b00007
2 1/2"	76,3	M8	108	25	50801b00009
3"	89,4	M8	121	25	50801b00010

## INSTALLAZIONE - INSTALLATION



## CARATTERISTICHE ANCORANTE - PRODUCT FEATURES

Tipo Type	Materiale Material	Rivestimento Coating
Cravatta / Dado Clamp / Nut	acciaio steel	zincatura bianca $\geq 5\mu\text{m}$ ISO4042 white zinc plated $\geq 5\mu\text{m}$ ISO4042
Staffa Bracket	acciaio steel	zincatura bianca $\geq 5\mu\text{m}$ ISO4042 white zinc plated $\geq 5\mu\text{m}$ ISO4042