



friulsider

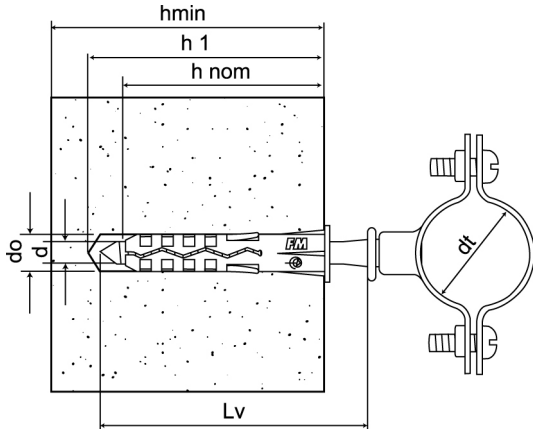
SCHEDA TECNICA – TECHNICAL SHEET

Via Trieste 1, 33048 San Giovanni al Natisone, Udine, Italia
 Tel. +39 0432 747911 - Fax +39 0432 758444
 www.friulsider.com - info@friulsider.com
 Assistenza tec. per Italia: Tel. 0432 747906 - Fax verde 800 301052

CFC Collare per tubi e cavi / *Collar for pipes and cables*

Rev: 00
 Pag. 1/1

DATI TECNICI - TECHNICAL DATA



- do = diametro foro / *hole diameter*
- h1 = profondità minima foro / *minimum hole depth*
- hnom = profondità minima di posa / *nominal embedment depth*
- hmin = spessore minimo supporto / *minimum support thickness*
- d = diametro vite / *screw diameter*
- dt = diametro tubo / *tube diameter*
- Lv = lunghezza vite / *screw length*

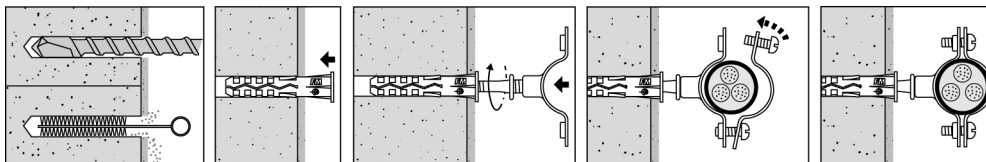
dt mm	do mm	h1 mm	hnom mm	hmin mm	d mm	Lv mm	Articolo completo Complete with fixing set Cod.	Solo collare Clamp only Cod.
10	6	40	30	60	4	35	50201b10000	50200b10000
12	6	40	30	60	4	35	50201b12000	50200b12000
14	6	40	30	60	4	35	50201b14000	50200b14000
16	6	40	30	60	4	35	50201b16000	50200b16000
18	6	40	30	60	4	35	50201b18000	50200b18000
20	6	40	30	60	4	35	50201b20000	50200b20000
22	6	40	30	60	4	35	50201b22000	50200b22000
24	8	50	40	80	6	60	50201b24000	50200b24000
26	8	50	40	80	6	60	50201b26000	50200b26000
28	8	50	40	80	6	60	50201b28000	50200b28000
32	8	50	40	80	6	60	50201b32000	50200b32000
38	8	50	40	80	6	60	50201b38000	50200b38000
50	8	50	40	80	6	60	50201b50000	50200b50000
60	8	50	40	80	6	60	50201b60000	50200b60000

SUPPORTI – BASE MATERIALS

● idoneo / *suitable applications* ◐ parzialmente indicato / *partially suitable applications*

- calcestruzzo / *concrete*
- mattone semipieno / *honeycomb brick*
- blocco forato Poroton / *light weight honeycomb brick*
- ◐ blocco forato Leca / *hollow light aggregate block*
- pietra compatta / *solid stone*
- mattone pieno / *solid brick*
- ◐ mattone forato / *cell like clay brick*
- ◐ blocco forato cemento / *hollow dense aggregate block*
- cemento cellulare / *aerated concrete*

INSTALLAZIONE - INSTALLATION



Temperatura di posa / <i>Installation temperature:</i>	+5 / +40 °C
Temperatura di esercizio / <i>Working temperature:</i>	-40 / +40 °C (max +80 °C breve periodo / <i>for short period</i>)
Non sono consigliate applicazioni permanenti con carichi sospesi oltre i 40°C utilizzando ancoranti plastici <i>The use of plastic anchors is not recommended for permanent suspended loading applications above 40°C.</i>	

CARATTERISTICHE ANCORANTE - PRODUCT FEATURES

Tipo / <i>Type</i>	Materiale / <i>Material</i>	Rivestimento / <i>Coating</i>
Tassello / <i>Plug</i>	nylon Pa6	-
Vite di congiunzione / <i>Studscrew</i>	acciaio / <i>steel</i>	zincatura bianca ≥ 5µm ISO 4042 / <i>white zinc plated ≥ 5µm ISO 4042</i>
Collare / <i>Collar</i>	acciaio / <i>steel</i>	zincatura bianca ≥ 5µm ISO 4042 / <i>white zinc plated ≥ 5µm ISO 4042</i>